

theElliston

Spacious open plan living at its best.



3 Beds 2 Baths 208.78 m²

facade: Contemporary

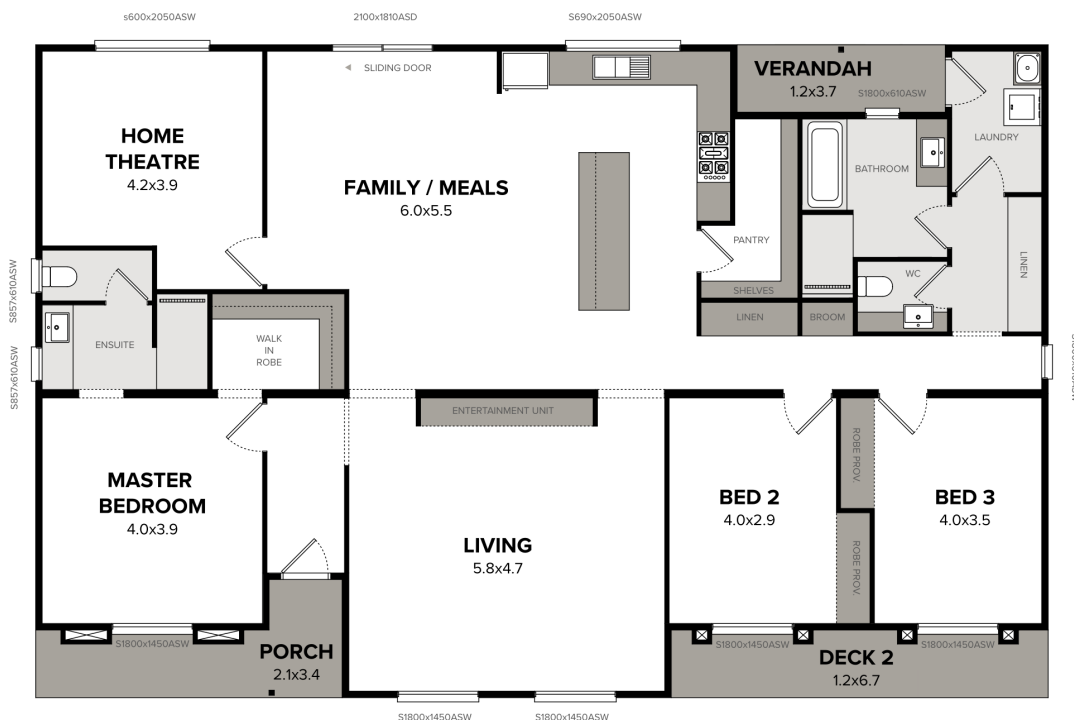
With quality features and stunning finishes throughout, the Elliston is a bold example of clever home design. At its heart, an enormous open plan living area ensures ample space to enjoy quality family time, while the secluded home theatre is the perfect place to retreat. Enjoy spacious living for the perfect family atmosphere.



Facades displayed above are for illustrative purposes only and some items may not be included in the price

floorplan: Standard

3 Bedrooms | 2 Bathrooms | Width : 18.00m | Length : 11.60m



Interested in getting started?

Call us on: **(08) 8282 7373**