

theRosemont

Designed for living.



4 Beds 2 Baths 149.04 m²

facade: Country

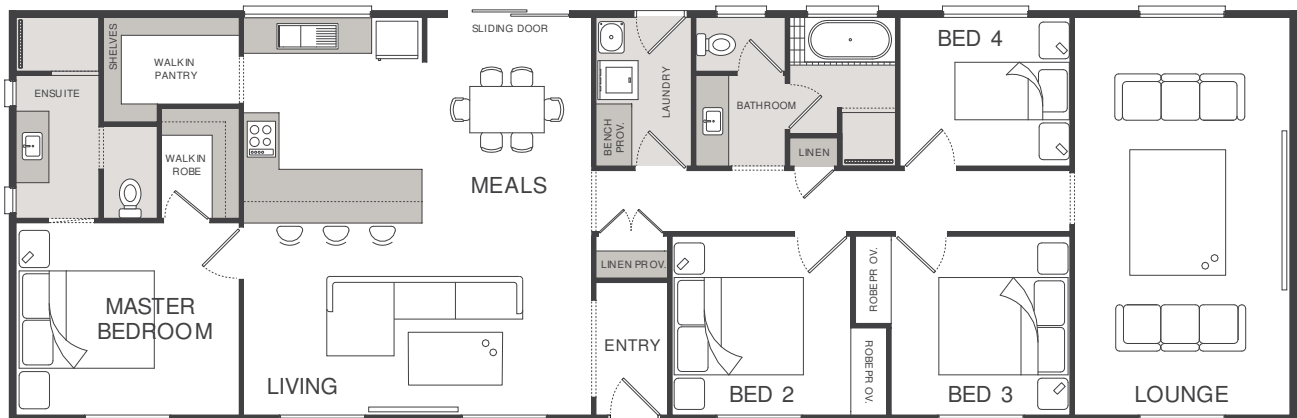
A spacious family area is ideally located at the heart of this beautiful home, providing a sophisticated and relaxing atmosphere. Entertain friends or simply relax on warm summer nights in the Rosemont.



Facades displayed above are for illustrative purposes only and some items may not be included in the price

floorplan: Standard

4 Bedrooms | 2 Bathrooms | Width : 21.60m | Length : 6.90m



Interested in getting started?

Call us on: **(08) 8282 7373**