

theCumberland

A breeze to live in.



3 Beds 1 Baths 108.02 m²

facade: Coastal

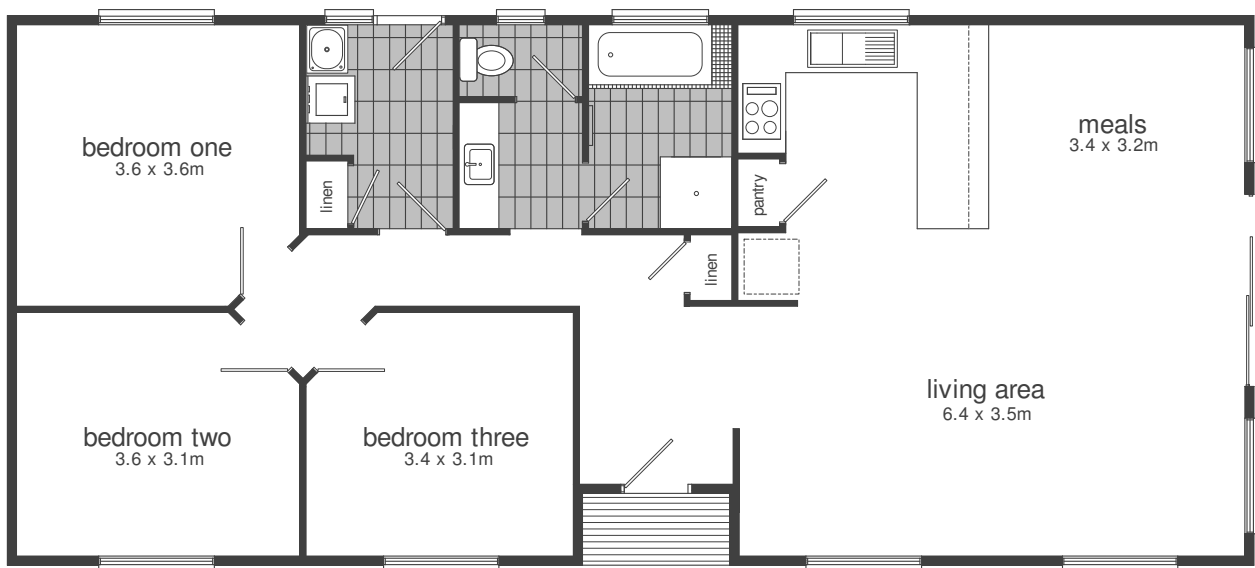
The ample space created in the Cumberland makes it a breeze to live in. This home lends itself to any environment, whether it be river, beach, hills or country.



Facades displayed above are for illustrative purposes only and some items may not be included in the price

floorplan: Standard

3 Bedrooms | 1 Bathrooms | Width : 15.65m | Length : 6.90m



Interested in getting started?

Call us on: **(08) 8282 7373**