

# theAlford

Seamless connection throughout.



4 Beds 2 Baths 295.92 m<sup>2</sup>

## facade: Coastal

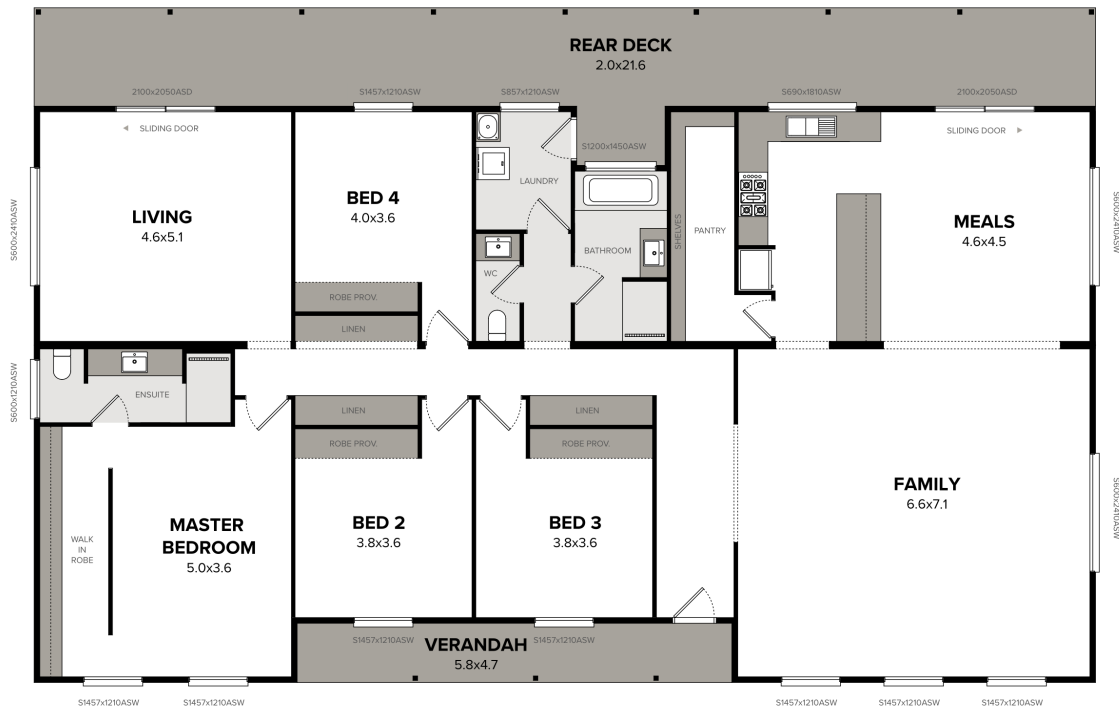
This gorgeous home has an elegant ambience, with each space seamlessly connecting to the next. Enjoy quality family time in the spacious open plan living area, or retreat to the secluded separate lounge area. The Alford's clever layout makes everyday living a breeze.



Facades displayed above are for illustrative purposes only and some items may not be included in the price

## floorplan: Standard

4 Bedrooms | 2 Bathrooms | Width : 21.60m | Length : 13.70m



Interested in getting started?

Call us on: **(08) 8282 7373**