

theLucindale

Perfect for the entertainer.



4 Beds 2 Baths 189.14 m²

facade: Coastal

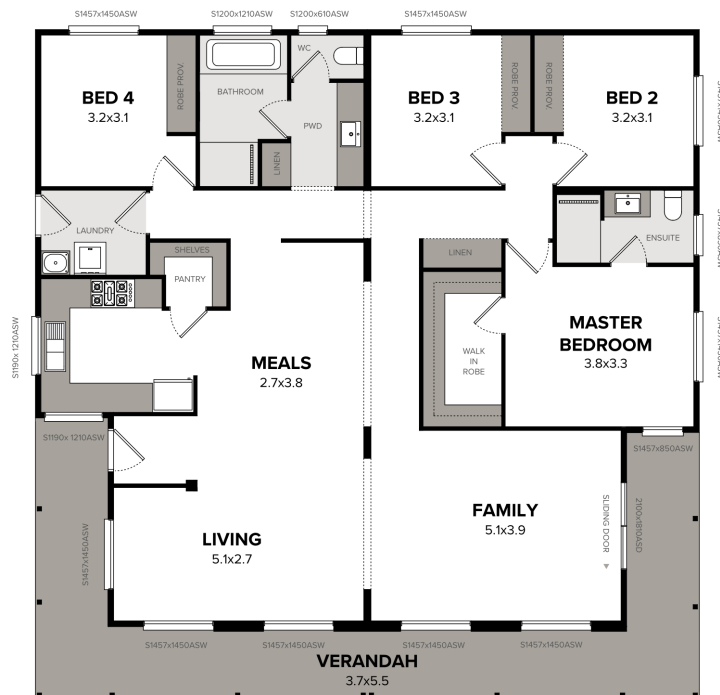
The style that the Lucindale displays in its facade is continued throughout the interior of the home. The spacious living and family area with the large front verandah creates a home that is perfect for the entertainer.



Facades displayed above are for illustrative purposes only and some items may not be included in the price

floorplan: Standard

4 Bedrooms | 2 Bathrooms | Width : 13.70m | Length : 13.80m



Interested in getting started?

Call us on: **(08) 8282 7373**