

# theMulford

A holiday or family home.



4 Beds



2 Baths



109.02 m<sup>2</sup>



Priced At \$122,232

## facade: Country

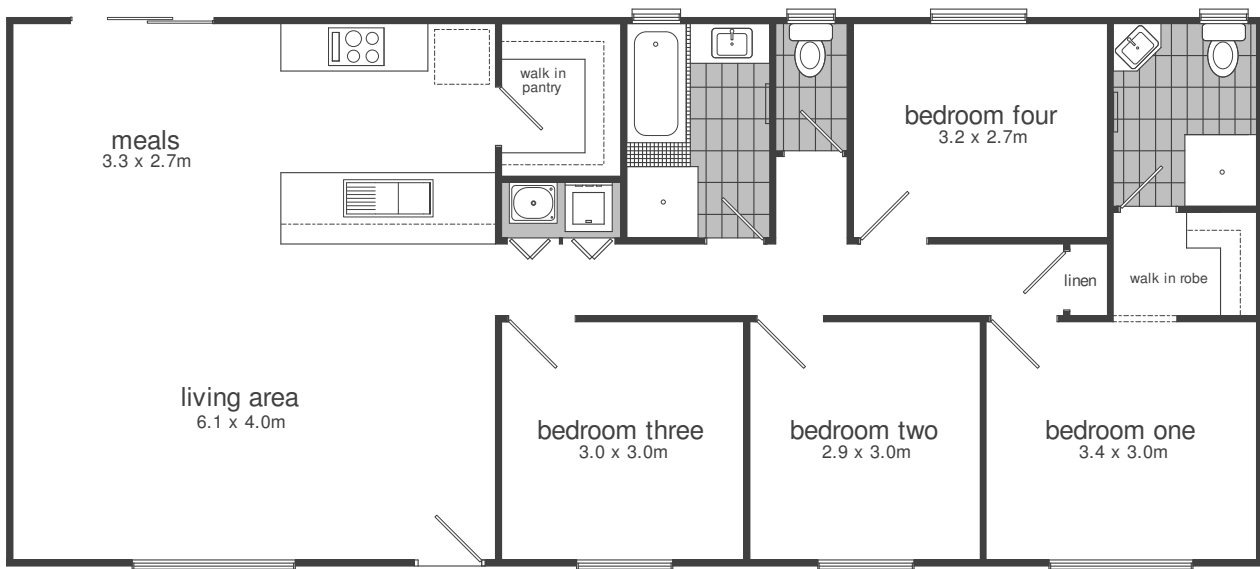
Simple yet appealing, the Mulford is functional and well thought out. Sunlight floods the bedrooms and large living area along the front of the home, creating a feeling of warmth and space.



Facades displayed above are for illustrative purposes only and some items may not be included in the price

## floorplan: Standard

4 Bedrooms | 2 Bathrooms | Width : 15.80m | Length : 6.90m



Interested in getting started?

Call us on: **(08) 8282 7373**