

theElliston

Beautiful homes... delivered



3 Beds



2 Baths



181.29 m²

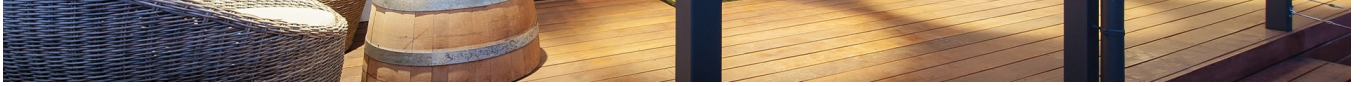
With quality features and stunning finishes throughout, the Elliston is a bold example of a clever modular home design. The best of living starts at the front of the home with its combined entry and verandah for entertaining. A vast open plan living area ensures ample space to enjoy quality family time, while the secluded bed and bath amenities in the family living wing offers a private place to retreat. Whether it's spacious living or privacy to reside, the Elliston offers the perfect family atmosphere.

Features:

- 3 spacious bedrooms including private master off entry
- Suitable for up to 4-6 people (subject to bedding configuration)
- Formal entry off front verandah
- Galley kitchen featuring walk-in pantry and quality Fisher & Paykel appliances
- Second living space for the kids to retreat
- Tiles bathroom floor and walls
- BlueScope Truecore® structural framework - exclusive to ASTH & MJH Group
- Year-round comfort with effective 6-star energy rated insulation
- Clear glazed aluminum windows with colour-matched fly screens
- Data connectivity including NBN provision

[Click here to download the MyStyle Inclusions brochure](#)





Facades displayed above are for illustrative purposes only and some items may not be included in the price

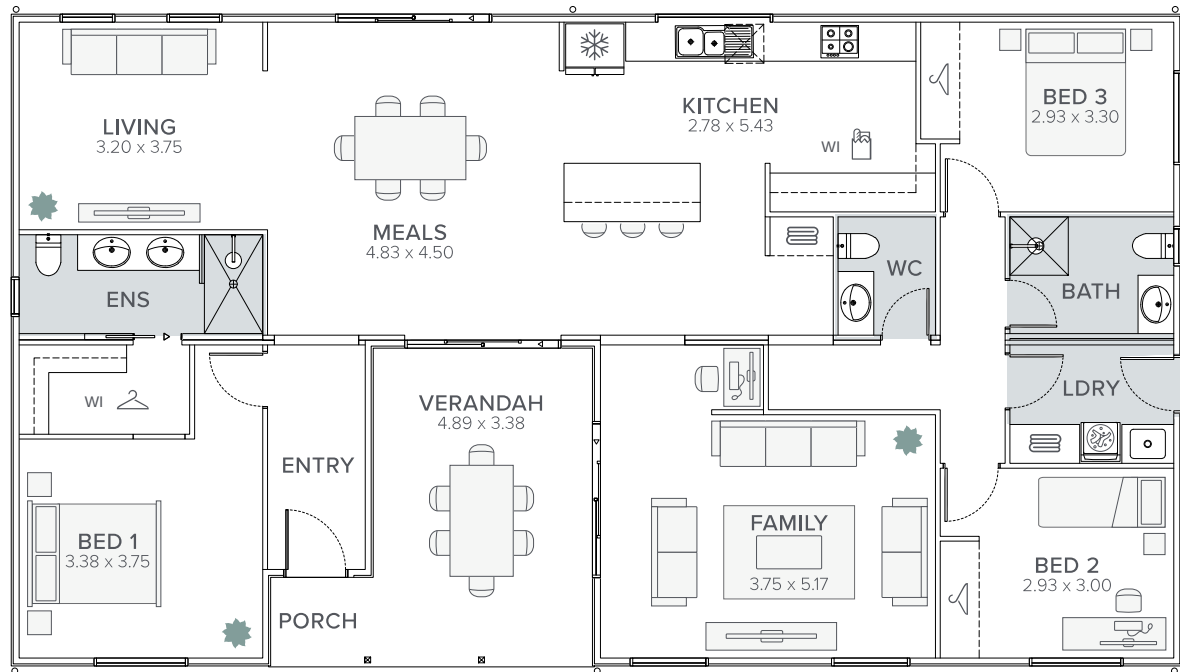
floorplan: Standard

3 Bedrooms

2 Bathrooms

Width : 18.05m

Length : 10.05m



Interested in getting

Call us on: **1800 219 278**