

theHalbury

Modern ingenuity at its best.



4 Beds



2 Baths



293.76 m²

facade: Contemporary

The Halbury is a tasteful example of modern ingenuity, featuring clever elements to enhance everyday living. The secluded master bedroom boasts a generous walk in robe and ensuite bathroom, while the remaining bedrooms are cleverly located at the other end of this beautiful home. Centrally located open plan living opens onto an expansive deck, creating the ideal entertaining space.



Facades displayed above are for illustration only. Some items may not be included.

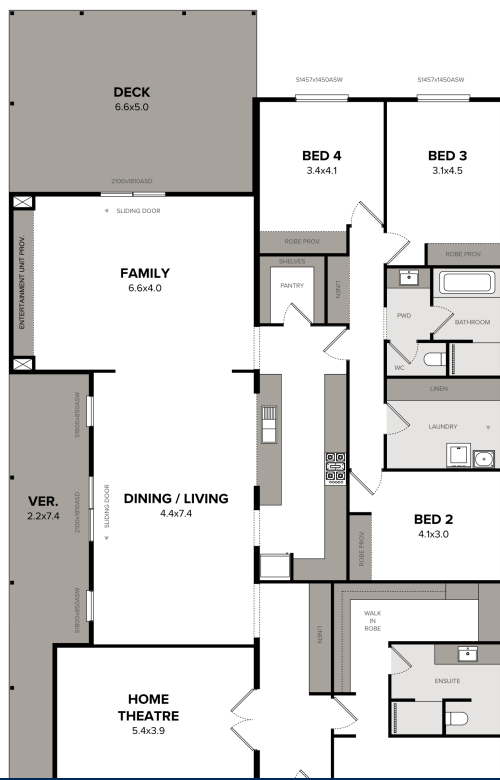
floorplan: Standard

4 Bedrooms

| 2 Bathrooms

| Width : 24.00m

| Length : 13.60m



Interested in getting started?

Call us on: (08