

theAlford

Seamless connection throughout.



4 Beds



2 Baths



295.92 m²

facade: Coastal

This gorgeous home has an elegant ambience, with each space seamlessly connecting to the next. Enjoy quality family time in the spacious open plan living area, or retreat to the secluded separate lounge area. The Alford's clever layout makes everyday living a breeze.



Facades displayed above are for illustration only. Some items may not be included.

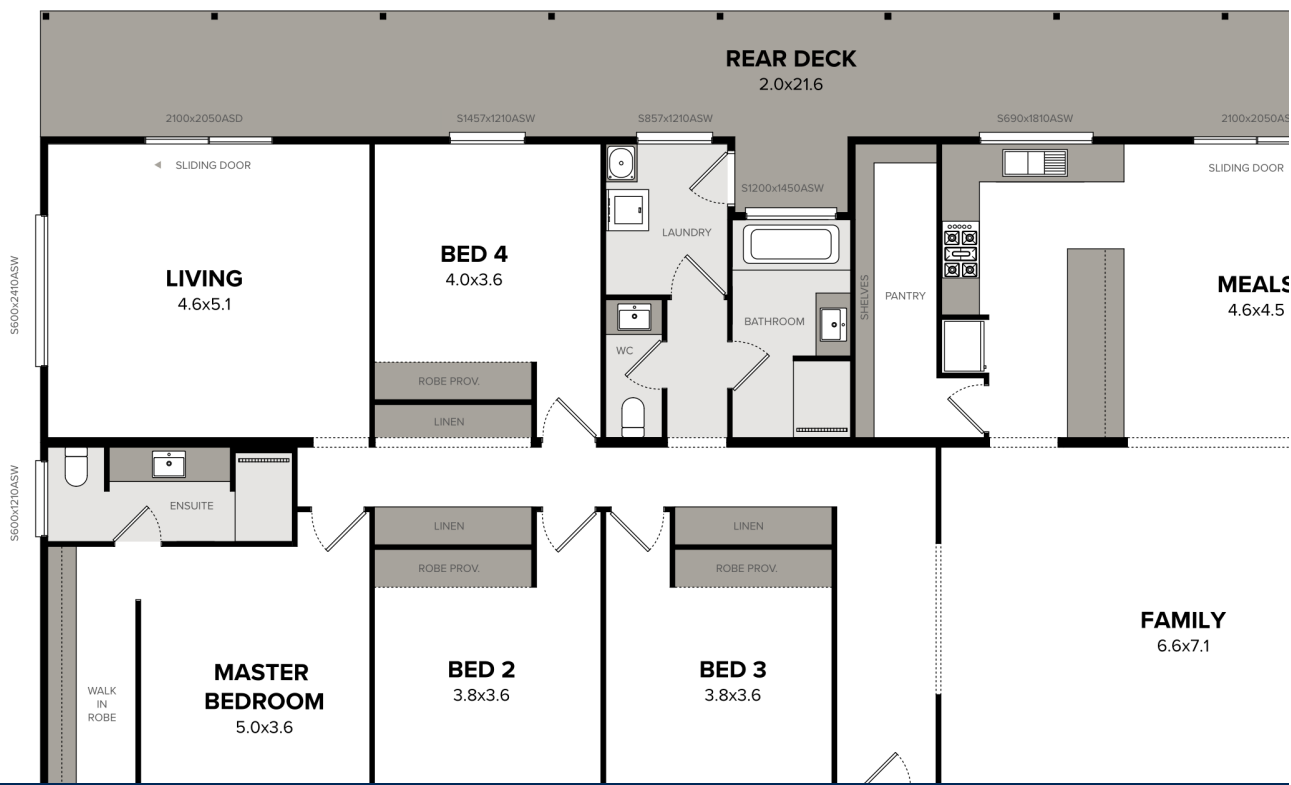
floorplan: Standard

4 Bedrooms

| 2 Bathrooms

| Width : 21.60m

| Length : 13.70m



Interested in getting started?

Call us on: (08