

# theGreenway

Designed for living.



4 Beds



2 Baths



137.00 m<sup>2</sup>

facade: Coastal

Large living areas that open onto a stunning verandah in this home provide a spacious feel.



Facades displayed above are for illustrative purposes only and may not be included in the price

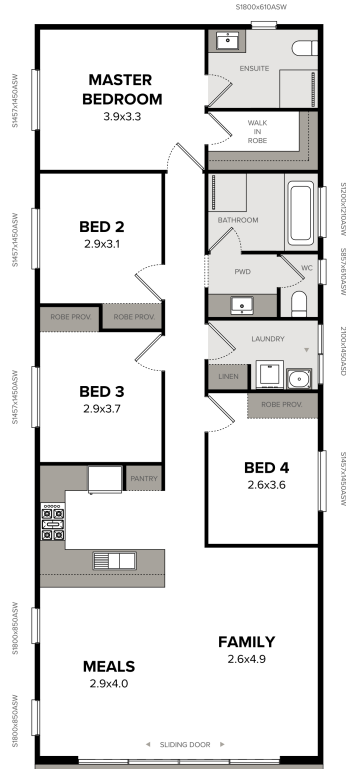
**floorplan:** Standard

4 Bedrooms

| 2 Bathrooms

| Width : 6.85m

| Length : 20.00m



Interested in getting started?

Call us on: (08