

theMonash

Picture perfect.



3 Beds



1 Baths



115.77 m²

facade: Contemporary

Whether set in a cosy town or on the banks of the river, the Monash exudes warmth and charm. Innovative and practical in its design, the bedrooms are divided by the two way bathroom which is not only functional but also conserves space.



Facades displayed above are for illustration purposes only. Some items may not be included.

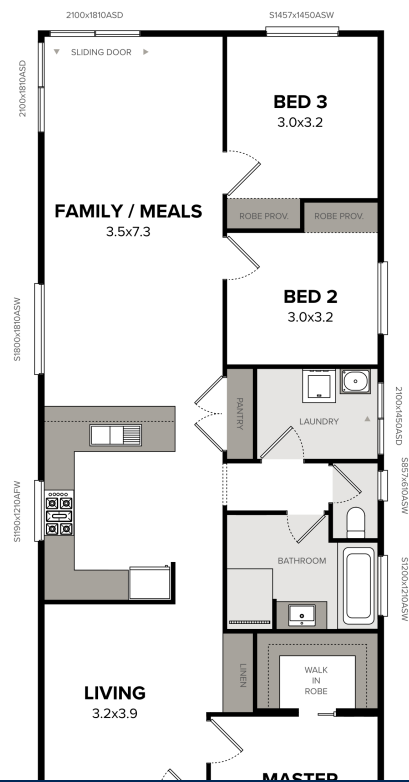
floorplan: Standard

3 Bedrooms

| 1 Bathrooms

| Width : 6.85m

| Length : 16.90m



Interested in getting started?

Call us on: (08