

theRosemont Mk2



Perfect for family living.



4 Beds



2 Baths



147.96 m²

A spacious family area of the Rosemont Mk2 is practically located at the heart of this beautiful home, providing the perfect entertaining atmosphere. Everyone can simply relax on warm summer nights in the Rosemont Mk2.



Facades displayed above are for illustrative purposes only and some items may not be included in the price

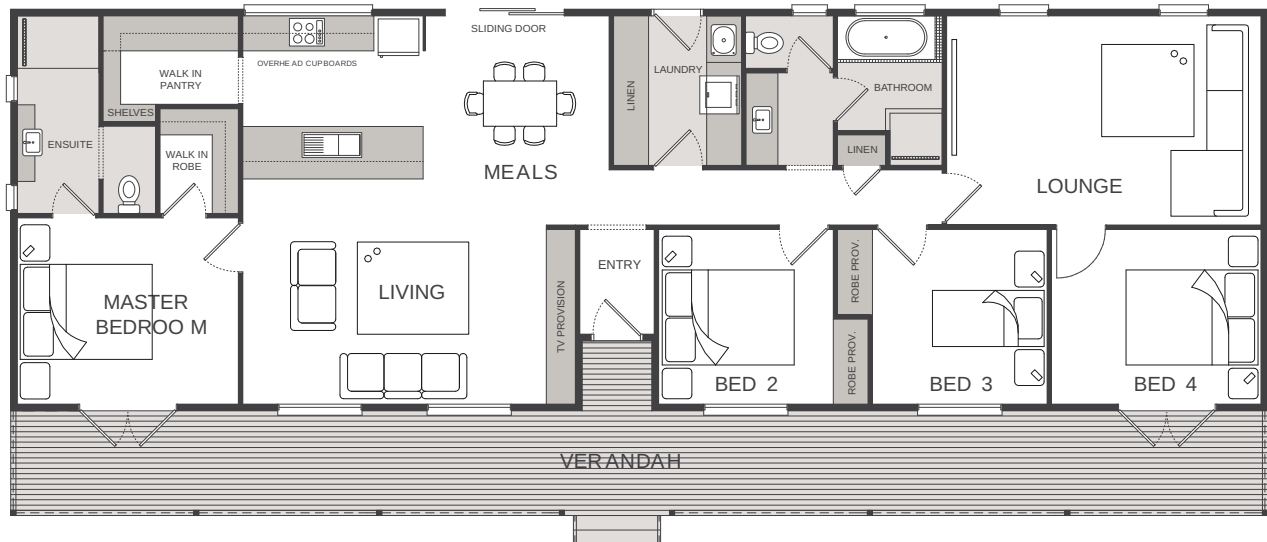
floorplan: Standard

4 Bedrooms

| 2 Bathrooms

| Width : 21.60m

| Length : 6.85m



Interested in getting

Call us on: **(08) 8282 7373**