

# theRosewood

Beautiful homes... delivered



4 Beds



2 Baths



197.47 m<sup>2</sup>

The Rosewood proudly joins the range alongside the Eden and Delamere and delivers a host of functional living spaces which flow effortlessly and deliver practicality throughout. This clever design caters to everyone's needs without sacrificing the little things that transform a house into home. The architectural design welcomes you immediately upon entry, with the stand-out features including the galley-style kitchen and versatile additional living space. Boasting a high level of detail in the bedroom and bathroom placement suitably meets the needs of young families, whilst the 'parents retreat' affords privacy whilst still staying connected to the heart of the home.

## Features:

- Architecturally designed for deep blocks to maximise space
- Sleeps 8-10 (subject to bedding configuration)
- Generous storage for extended stays - Parents retreat style master bedroom
- Modest undercover front deck - Open plan living area for entertaining
- Galley-style kitchen featuring quality Fisher & Paykel kitchen appliances
- Tiled bathroom floor and walls
- BlueScope Truecore® structural framework - exclusive to ASTH & MJH Group
- Year-round comfort with effective 6-star energy rated insulation
- Clear glazed aluminum windows with colour-matched fly screens
- Data connectivity including NBN provision

[Click here to download the MyStyle Inclusions brochure](#)





**Facades displayed above are for illustrative purposes only and some items may not be included in the price**

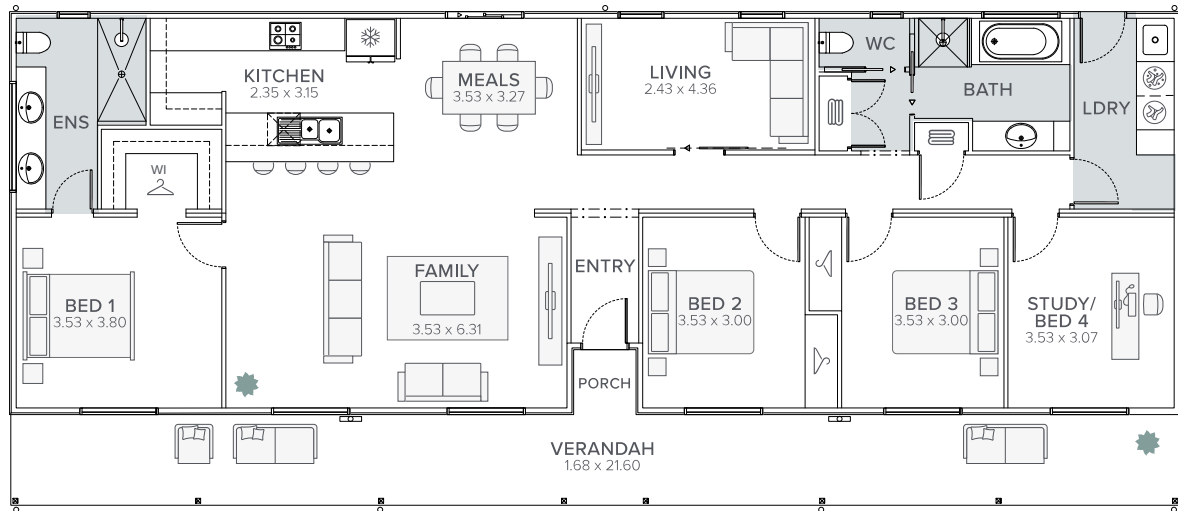
# floorplan: Standard

4 Bedrooms

| 2 Bathrooms

| Width : 21.65m

| Length : 9.10m



Interested in getting

Call us on: **1800 219 278**