

Beautiful homes... delivered

# SmartLivingrange



acacia



acacia **COUNTRY** facade

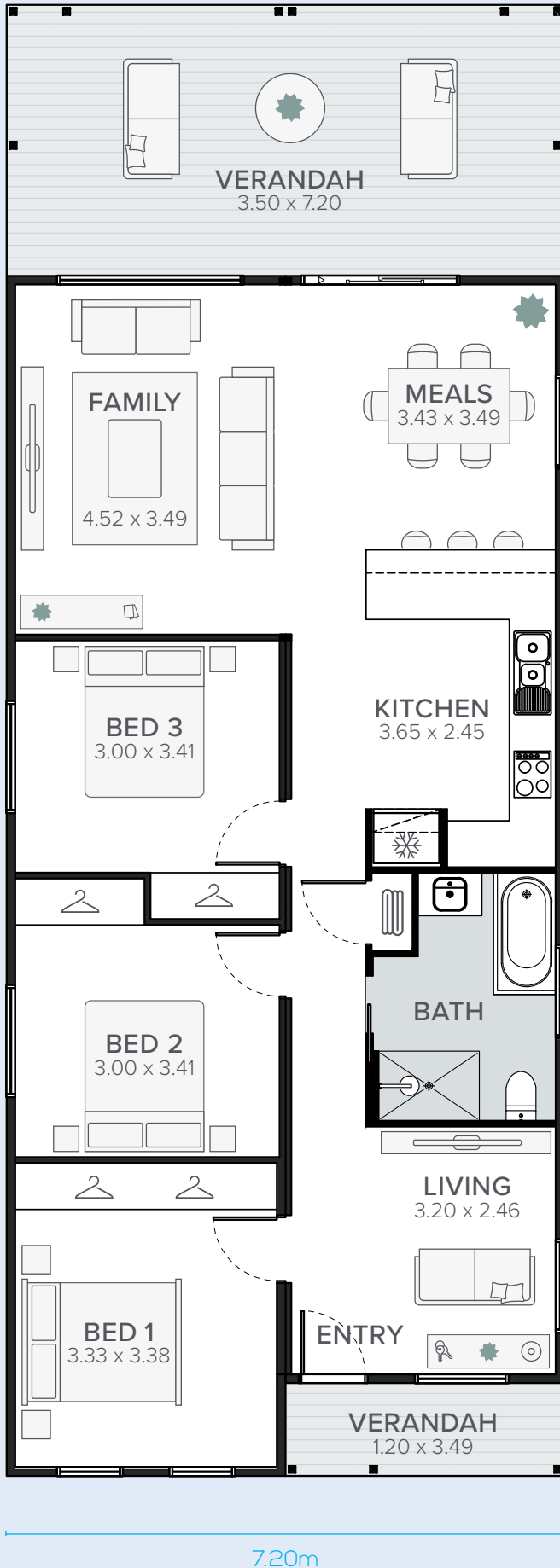


acacia **GABLE** facade



acacia **URBAN** facade

With three spacious bedrooms and ample living space, the Acacia lends itself to executive style park living. Perfect for a manager's residence, or larger groups of friends and family, this comfortable, open plan design provides a generous entertaining setting. The second living space could feature as a Kids Retreat whilst the family and meals areas flow out onto the covered rear deck, providing ample room to make the most of the Australian way of life.



**P:** 1800 219 278

**E:** customerservice@asth.com.au

**W:** asth.com.au



# acacia

## MARKET

Suitable for large groups, families, and domestic & regional long stay visitors.

## FEATURES

- 3 bedroom executive style park living
- Suitable for up to 10 people (subject to bedding configuration)
- Generous storage for long-term stays
- Flexible design with laundry optional
- Easy entertaining with covered rear deck and open meals area
- Comfortable, open plan living to take in the views
- 2nd living space for the kids to retreat
- Perfect for manager's residence
- Quality Fisher & Paykel kitchen appliances
- Tiled bathroom floor and walls
- BlueScope Truecore® structural framework – exclusive to AllSteel Transportable Homes & MJH Group
- Year-round comfort with effective 6-star energy rated Insulation
- Clear glazed aluminum windows with colour-matched fly screens
- Data connectivity including NBN provision



© Copyright. IMPORTANT NOTICE: All images contained in this brochure, including facades and floor plans are to be used as a guide only. Items depicted in imagery such as landscaping, flooring, decorative items, window furnishings and furniture are not included in the standard home price. In addition, various upgrade items are used for display purposes and represented in photography, including additional fixtures and fittings, and may not be included in the standard home price. Speak to your sales consultant to obtain a full list of standard inclusions. Floor plans and room dimensions may differ slightly depending on your chosen facade (for example, window locations may differ with different facades). Plans are not shown to scale, and all measurements are approximate only. Sliding windows may not open in direction shown. Allsteel Transportable Homes reserves the right to modify designs or specifications without notice. For detailed home pricing, including details about the standard inclusions for the house and charges for optional variations, please talk to one of our Sales Consultants. All rights reserved. No part of this brochure may be reproduced, stored in a retrieval system or transmitted in any form or by any means without the prior written permission of Allsteel Transportable Homes. Builder's Licence Number: SA BLN: G10238. NSW BLN: 280160C. 10.09.21



# standard inclusions\*

SmartLivingrange | FamilyLivingrange



We pride ourselves on quality, so in every Allsteel home, you are guaranteed the inclusion of the most innovative products and building technologies.

Overflowing with superior features and stunning finishes, enjoy the confidence that comes with owning a home that has been constructed to the highest level, and complete with state of the art appliances and fittings.



**allsteel**<sup>®</sup>  
homes



## ESSENTIAL

Working drawings (footings and building)  
Engineering tie-down report  
CITB (Construction Industry Training Board) levy  
Home Owner's Warranty insurance  
Local council/Private certifier fees  
Energy Efficiency Rating (EER) assessment

## STRUCTURAL

### Footings & Floor

Concrete block pier footing  
Ant caps provided for all non-steel footings (where applicable)  
Galvanised structural steel floor joists  
22mm Termifloor sheeting standard with 19mm Scyon Secura flooring to wet areas

### Wall Framing & Lining

BlueScope Truecore® Steel wall framing (90mm to external walls, 75mm to internal walls)  
90mm x 90mm Structural steel posts  
Breathable wall wrap to all external walls  
22mm min Thermal break batten  
10mm Plasterboard internal wall lining  
10mm Aquacheck Plasterboard internal lining to laundry, bathroom and ensuite

### Insulation

Floor – Bradford R3.0 Gold batt to subfloor  
External Walls – Bradford R2.0 Gold batts to all external walls

Internal Walls – Bradford R2.0 Soundscreen to internal walls surrounding wet areas  
Ceiling – Bradford R5.0 Gold batts to ceiling areas over internal rooms

## EXTERIOR

Weathertex 200mm Primelock smooth planking (9.5mm thick) with concealed fixings

### Roof

BlueScope Truecore® Steel hip roof frame per engineers specification  
17 Degree roof pitch, unsarked with 300mm eaves  
Colorbond® Custom Orb 0.42mm profile  
Colorbond® Novaline metal fascia, OGEE gutter and 75mm PVC downpipes

### Windows

Dowell clear glazed aluminium sliding windows – colours from Builder's range  
Mullion locks (keyed alike)  
Obscure glazing to bathroom, ensuite and WC  
Aluminium frame colour-matched to window with fibreglass mesh

### Painting

Weathertex Planking – Three (3) coats of Watty! Solaguard Low Sheen  
Doors/Trims – One (1) undercoat and two (2) finishing coats of Watty! Solaguard Satin Acrylic (Three (3) coat paint system)  
Eaves/Ceilings – Two (2) coats of Watty! Solaguard Matte Acrylic  
Decking – Watty! Weatherguard Prodeck Decking Oil

## INTERIOR

### Ceiling

2550mm Ceiling height

Internal 10mm Supaceil plasterboard

Porch/Eave – 4.5mm fibre cement lining with plastic joining strips

Moulded plastic manhole with removable access panel

### Mouldings

90mm Cove cornice to all rooms

Square dressed Skirting & Architrave – 67mm x 18mm primed MDF

### Doors

Internal – Corinthian Impressions range 2040mm x 820mm – primed and painted

Entry – Corinthian Urban range 2040mm x 820mm – primed and painted

Enviroseal frame to all hinged external doors

Sliding – Dowell Aluminium sliding door 2100mm high – powdercoated

Laundry – Corinthian Solid core half glass 2040mm x 820mm with Enviroseal door frame – primed and painted (plan specific)

Tradepro Tristan entrance leverset with single cylinder deadbolt

Keyed deadlock to external sliding doors

Tradepro Tristan passage leversets – privacy set to bathroom, ensuite and WC

Flushpull handles to cavity sliding doors

Gainsborough 6203 Wallstop to all hinged doors

### Robes

Space provision as per plan (robes additional cost)

### Painting

Walls – One (1) undercoat and two (2) finishing coats of Solver Maxi Wash Flat (Three (3) coat paint system)

Doors/Trims – One (1) undercoat and two (2) finishing coats of Watty Aqua trim water-based enamel (Three (3) coat paint system)

Ceiling – One (1) undercoat and two (2) finish coats of Watty Trade Ceiling White acrylic (Three (3) coat paint system)

## KITCHEN

Coloured melamine floor cabinets and benchtops, including flat servery cabinets with 900mm wide tops and back panels to match cabinets, dependent on design, from standard builder's range

One (1) Bank of 450mm drawers and one (1) bank of pot drawers

WIP with four (4) shelves (plan specific) or joiners pantry with two doors and four shelves (plan specific)

20mm Laminate benchtop (Polytec/Laminex/Formica)

Posh Solus MK3 1 3/4 Bowl stainless steel sink with one tap hole 1160mm x 500mm

Posh Solus MK2 Sink mixer (chrome)

Fisher & Paykel Gas cooktop – 600mm (CG604CLPX2) or Fisher & Paykel Ceramic Electric cooktop – 600mm (CE604CBX2)

Fisher & Paykel Built in oven – 600mm (OB60SC5LCX1)

Fisher & Paykel Canopy rangehood – 600mm (HC60DCXB3)

Ceramic wall and floor tiles from Builder's range – up to 700mm high, above all benchtops (Floor tiles not included)

## BATHROOM

1520mm Acrylic inset bath (white) with chrome pop-up waste (plan specific)

Kado Lux Square vanity basin with one tap hole 415mm

Laminate benchtop and two (2) coloured melamine doors 800mm high (nominal) bevelled edge mirror to length of vanity

Posh Solus MK3 Mixers (polished chrome) to vanity, shower and bath

Nikles Pearl Wall shower head (chrome)

Clear toughened glass Pivot 2000mm semi-framed shower cubicle

Posh Domaine close coupled rimless toilet suite with soft close seat

Mizu Drift chrome double towel rail (600mm) and toilet roll holder (located as per plan)

Ceramic wall and floor tiles from Builders range – 2000mm high in shower and 1200mm high elsewhere. Fully tiled floor

All shower floor areas graded

One (1) chrome square floor drain to each shower area

WC – Ceramic wall and floor tiles from Builder's range – one (1) skirt tile high skirting. Fully tiled floor

## LAUNDRY

Seima Tilos Metal tub and cabinet or Classic 45L Inset Trough with 2 tap holes (plan specific)

Posh Solus MK2 Sink mixer (chrome)

Ceramic wall and floor tiles from Builder's range – up to 700mm high above all benchtops. Fully tiled floor (plan specific)

## ELECTRICAL & GAS

Hanico 9W Downlights

Two (2) External wall mounted weatherproof batten lights

Clipsal Iconic series light switches

Clipsal Iconic range GPOs

One (1) Exhaust fan to each bathroom/ensuite

Two (2) TV aerial points

One (1) Telephone connection point

NBN Provision with conduit and draw wire and LUCA box

Single bathroom home: Rheem 20L 50°C instantaneous gas continuous flow unit (LPG)

Two bathroom home: Rheem 26L 50°C instantaneous gas continuous flow unit (LPG)





## Beautiful homes... delivered

P: 1800 219 278

E: [customerservice@asth.com.au](mailto:customerservice@asth.com.au)

W: [asth.com.au](http://asth.com.au)



**\*IMPORTANT NOTICE:**

Product images are for illustrative purposes only. The standard inclusions shown are applicable to the Smart Living Range and Family Living Range and correct at the time of print. Inclusions may be subject to change without notice and reserve the right to change suppliers and/or alter designs and specifications without notice in whole or part. Inclusions will be outlined in your quotation and contract. Images in this brochure may depict items not supplied by Allsteel Transportable Homes such as decking, internal and external fireplaces, window and household furnishings, landscaping, furniture and swimming pools. Published prices do not include the supply of these items. Images may also depict optional variations to the house, such as upgraded facades, pendant lights and downlights, which are not included and incur additional charges. All rights reserved. No part of this brochure may be reproduced, stored in a retrieval system or transmitted in any form or by any means without the prior written permission of Allsteel Transportable Homes. Builder's Licence Number: SA G10238. NSW BLN: 280160C. 31.03.22